



EMAIR

www.emair.co.za

RETURN AIR GRILLES

EMAIR

RG1

Single deflection grille, 45° fixed blade
Sizes from 100 x 100mm to 2500 x 2500mm
Powder coated or natural anodised finish
Suitable for duct or spigot mounting
Manufactured from extruded aluminium sections
19mm blade spacing (12mm blade spacing on request)
Available with opposed blade damper RG1O
Frame size 32mm - 16mm available on request



RASB

Single deflection grille, 45° fixed blade
Sizes from 100 x 100mm to 2500 x 2500mm
Powder coated or natural anodised finish
Suitable for duct or spigot mounting
Manufactured from extruded aluminium sections
25mm blade spacing (19mm blade spacing on request)
Available with opposed blade damper RASBO
Frame size 32mm - 16mm available on request



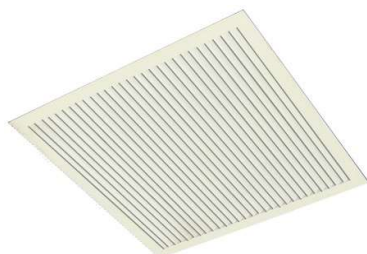
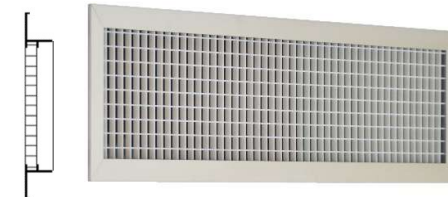
AEC

Aluminium egg crate grille
Sizes from 100 x 100mm to 1200 x 600mm
Powder coated or natural anodised finished frame
Suitable for duct or spigot mounting
Frame from extruded aluminium section and aluminium core
Available with opposed blade damper AECO
Frame size 32mm



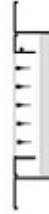
PEC

Plastic egg crate grille
Sizes from 100 x 100mm to 1200 x 600mm
Powder coated or natural anodised finished frame - core white
Suitable for duct or spigot mounting
Frame from extruded aluminium section and plastic core
Available with opposed blade damper PECO
Frame size 32mm



SGI-F

Single deflection grille, fixed blade
Sizes from 100 x 100mm to 3000 x 3000mm
Powder coated or natural anodised finish
Suitable for duct or spigot mounting
Manufactured from extruded aluminium sections
19mm blade spacing (12mm blade spacing on request)
Available with opposed blade damper RG10
Frame size 32mm - 16mm available on request



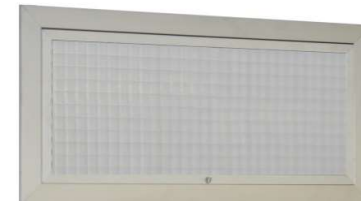
RG3-F

Hinged single deflection grille, fixed blade with removable filter matt
Sizes from 100 x 100mm to 1200 x 600mm
Powder coated or natural anodised finish
Suitable for duct or spigot mounting
Manufactured from extruded aluminium sections
19mm blade spacing (12mm blade spacing on request)
Available with opposed blade damper RG30-F
Frame size 32mm - 16mm available on request



AEC-F

Hinged aluminium egg crate grille with removable filter matt
Sizes from 100 x 100mm to 1200 x 600mm
Powder coated or natural anodised finished frame
Suitable for duct or spigot mounting
Frame from extruded aluminium section and aluminium core
Available with opposed blade damper AEC-FO
Frame size 32mm



PEC-F

Hinged plastic egg crate grille with removable filter matt
Sizes from 100 x 100mm to 1200 x 600mm
Powder coated or natural anodised finished frame - core white
Suitable for duct or spigot mounting
Frame from extruded aluminium section and plastic core
Available with opposed blade damper PEC-FO
Frame size 32mm

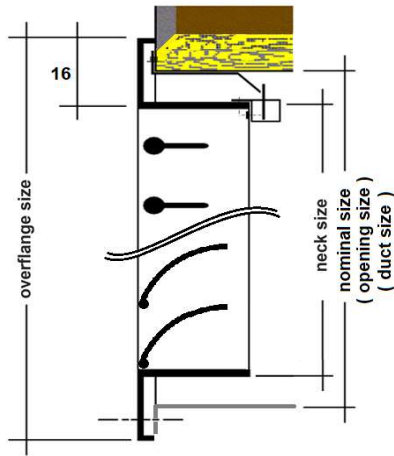


Size (mm)		200 x 100	200 x 125	200 x 150 300 x 100	200 x 200 400 x 100	250 x 200 500 x 100	300 x 200 450 x 150	450 x 150 650 x 100	350 x 200 500 x 150	400 x 200 550 x 150	450 x 200 600 x 150	450 x 300 700 x 200
Air Vol. l/s												
47	Stat. Press Pa	57	20	12	7.5	5	5	2.5	2.5	2.5	2.5	
	NC (max)	30	20	20	20	20	20	20	20	20	20	
71	Stat. Press Pa		45	32	17	10	7.5	7.5	5	5	5	
	NC (max)		30	25	20	20	20	20	20	20	20	
94	Stat. Press Pa		80	55	32	20	10	10	7.5	7.5	7.5	2.5
	NC (max)		35	35	30	20	20	20	20	20	20	20
118	Stat. Press Pa			82	47	32	20	15	10	10	7.5	5
	NC (max)			40	35	30	25	20	20	20	20	20
141	Stat. Press Pa				72	45	30	22	15	12.5	10	5
	NC - db (max)				40	35	30	25	25	20	20	20
165	Stat. Press Pa					62	42	32	22	20	12.5	7.5
	NC (max)					40	35	30	30	25	25	20
189	Stat. Press Pa					77	52	40	30	22	20	7.5
	NC (max)					40	35	35	30	30	25	20
212	Stat. Press Pa						65	50	40	32	25	10
	NC (max)						40	40	35	30	30	20
236	Stat. Press Pa						80	62	47	40	32	10
	NC (max)						40	40	35	35	30	25
283	Stat. Press Pa							82	70	52	42	17
	NC (max)							45	40	40	40	30
331	Stat. Press Pa									72	57	25
	NC (max)									45	40	35
378	Stat. Press Pa										75	32
	NC (max)										45	35
425	Stat. Press Pa											40
	NC (max)											40
472	Stat. Press Pa											50
	NC (max)											40
567	Stat. Press Pa											75
	NC (max)											45

Size (mm)		600 x 300 750 x 250	500 x 450 750 x 300	600 x 450 900 x 300	900 x 400 1225 x 300	750 x 600 900 x 500	900 x 600 1225 x 450	1225 X 450	1000 x 900 1225 x 750	1225 x 900 1425 x 750	1425 x 900	1525 x 900
Air Vol. l/s												
118	Stat. Press Pa	2.5										
	NC (max)	20										
141	Stat. Press Pa	5	2.5									
	NC (max)	20	20									
165	Stat. Press Pa	5	2.5	2.5								
	NC (max)	20	20	20								
189	Stat. Press Pa	5	5	2.5								
	NC (max)	20	20	20								
212	Stat. Press Pa	7.5	5	2.5								
	NC - db (max)	20	20	20								
236	Stat. Press Pa	7.5	5	5	2.5							
	NC (max)	20	20	20	20							
283	Stat. Press Pa	10	7.5	5	5	2.5						
	NC (max)	20	20	20	20	20						
331	Stat. Press Pa	12.5	10	7.5	5	2.5	2.5					
	NC (max)	25	20	20	20	20	20					
378	Stat. Press Pa	17	10	10	5	5	2.5					
	NC (max)	30	25	20	20	20	20					
425	Stat. Press Pa	25	12.5	10	7.5	5	2.5					
	NC (max)	35	30	25	20	20	20					
472	Stat. Press Pa	32	17	10	7.5	5	5	2.5				
	NC (max)	35	30	30	20	20	20	20				
567	Stat. Press Pa	42	27	20	10	7.5	5	5	2.5			
	NC (max)	40	35	30	25	20	20	20	20			
661	Stat. Press Pa	57	37	27	12.5	10	7.5	5	7.5	2.5		
	NC (max)	45	40	35	30	25	20	20	20	20		
755	Stat. Press Pa	75	47	35	17	10	10	5	5	2.5		
	NC (max)	50	45	40	35	30	25	20	20	20		
850	Stat. Press Pa		60	42	22	12.5	10	7.5	5	5	2.5	2.5
	NC (max)		45	40	40	35	30	20	20	20	20	20
944	Stat. Press Pa		72	50	30	17	10	7.5	5	5	2.5	2.5
	NC (max)		50	45	40	35	30	25	20	20	20	20
1180	Stat. Press Pa			75	45	30	20	10	7.5	5	5	5
	NC (max)			50	45	40	35	30	25	20	20	20
1416	Stat. Press Pa				65	42	30	15	10	7.5	5	5
	NC (max)				50	45	40	35	30	20	25	20
1652	Stat. Press Pa				82	55	40	22	12.5	10	7.5	7.5
	NC (max)				50 +	50	45	40	35	30	30	25
1889	Stat. Press Pa					70	50	30	17	10	10	7.5
	NC (max)					50	50	45	40	35	30	30

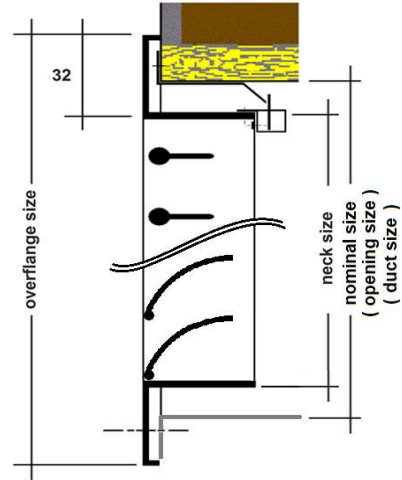
NC Noise Criteria of sound pressure levels with 8dB room absorption (L_w ref:10⁻¹² watts)

STANDARD GRILLES - 16mm FRAME



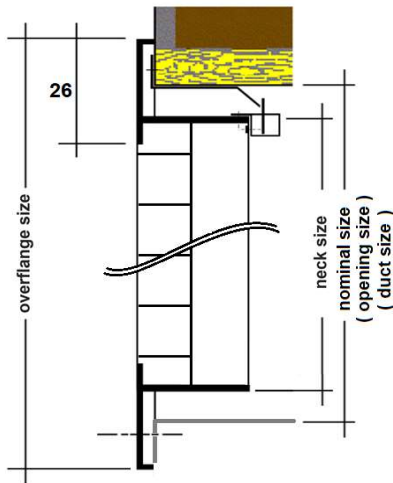
NOMINAL SIZE = OPENING SIZE = DUCT SIZE
NECK SIZE = NOMINAL SIZE - 14mm
O/FLANGE SIZE = NOMINAL + 15mm

STANDARD GRILLES - 32mm FRAME



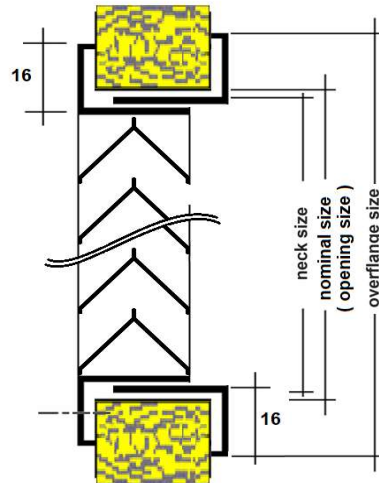
NOMINAL SIZE = OPENING SIZE = DUCT SIZE
NECK SIZE = NOMINAL SIZE - 14mm
O/FLANGE SIZE = NOMINAL + 47mm

EGG CRATE GRILLES



NOMINAL SIZE = OPENING SIZE = DUCT SIZE
NECK SIZE = NOMINAL SIZE - 7mm
O/FLANGE SIZE = NOMINAL + 30mm

DOOR GRILLES 16mm FRAME



NOMINAL SIZE = OPENING SIZE
NECK SIZE = OPENING SIZE - 7mm
OVER FLANGE SIZE = OPENING SIZE + 22mm