

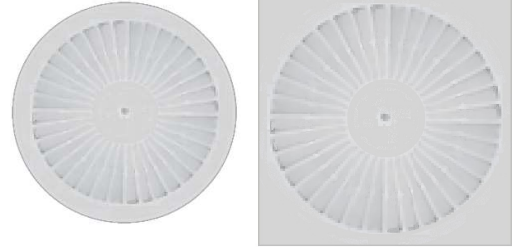


EMAIR

www.emair.co.za

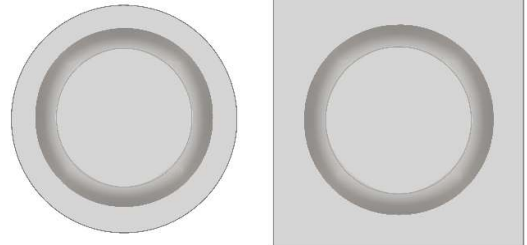
DSC / DSQ

Constant volume diffuser with top entry spigot
Sizes available - 150, 175, 200, 250, 300
& 350mm dia inlet
Powder coated finish with galvanised plenum
Suitable for installation in open, suspended or
plaster ceilings
Maximum installation height of 3.5m above floor level
Face plate 595 x 595 overall
Circular or square plate
Available with installation rings for plaster ceiling



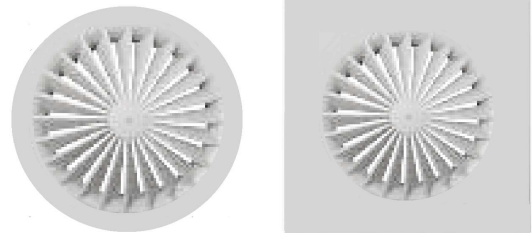
CPC / CPQ

Constant volume diffuser with top entry spigot
Sizes available - 150, 175, 200, 250, 300
& 350mm dia inlet
Powder coated finish with galvanised plenum
Suitable for installation in open, suspended or
plaster ceilings
Maximum installation height of 3.5m above floor level
Face plate 595 x 595 overall
Circular or square plate
Available with installation rings for plaster ceiling



RSC / RSQ

Constant volume diffuser with top or side entry spigot
Sizes available - 150, 175, 200 & 250mm diameter inlet
Powder coated finish with galvanised plenum
Suitable for installation in open, suspended or
plaster ceilings
Maximum installation height of 3.5m above floor level
Face plate 595 x 595 overall
Optional damper butterfly or floating
Circular or square plate
Available with installation rings for plaster ceiling



ROC / ROQ

Constant volume diffuser with direct top entry or
side entry plenum
Sizes available - 150, 175, 200, 250 315 & 400mm
diameter inlet
Powder coated finish with optional galvanised plenum
Suitable for installation in open or plaster ceilings
Maximum installation height of 5.0m above floor level
Optional damper with plenum application
Circular or square plate
Available with installation rings for plaster ceiling

